

Hi Nikolina

Welcome To Your Design Proposal

Here you can access your renders, quotations, & specification details for the solutions proposed.

You can scroll through each section and use the tabs at the top to navigate the sections.



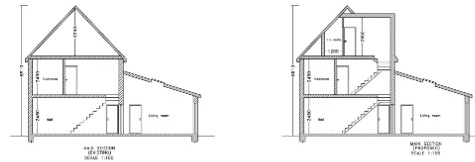
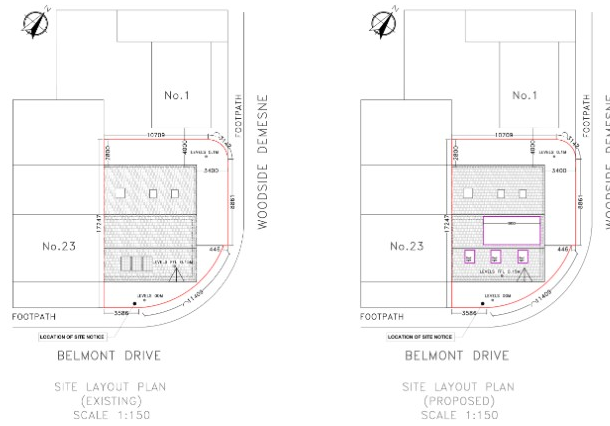
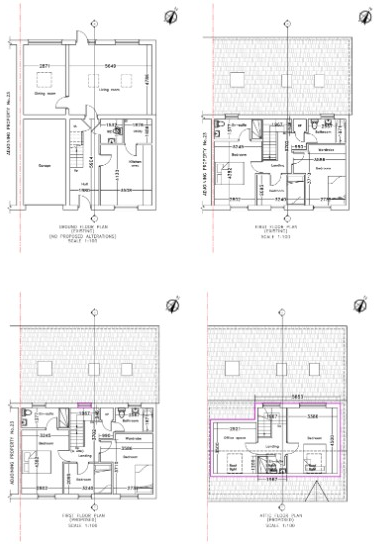
Your home and opportunities

PROJECT TYPE

Loft conversion

Rooms

Bedroom, Bathroom, Bedroom



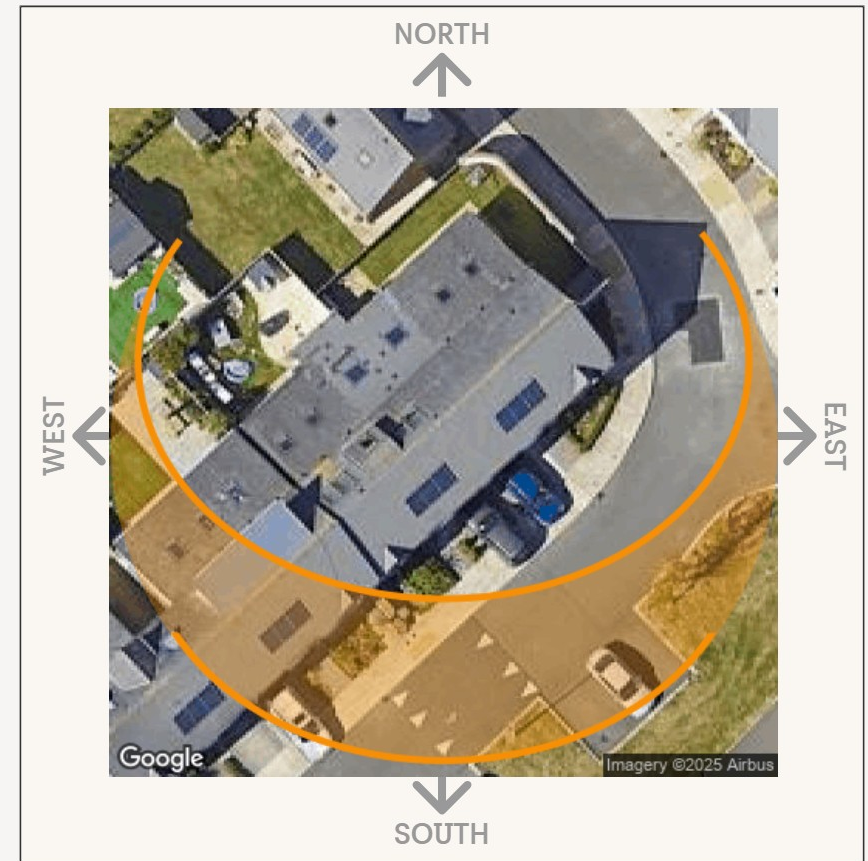
SPECIFICATIONS
 External finishes to match existing
 Gutters and downpipes to match existing
 Roof finishes to match existing
 Windows and doors UPVC or wood to match existing

<p>NOTES Drawings not to be scaled from. Use written dimensions only. Cutting out dimensions to be checked against plans. To be used with other drawings and specifications. Any discrepancies in dimensions or specifications to be brought to the attention of the Engineer/Designer. All dimensions are to be confirmed by the Engineer/Designer. DRAWINGS NOT FOR CONSTRUCTION PURPOSES CHANGES IN MAGENTA</p>	<p>Drawings by Peter Parsons Planning permission and Building design services 18 Warrington Gardens Rushmore Dublin 14 www.dublinhouseplans.ie</p>	<p>CLIENT: Bonnier and Waring Maps 24 Belmont St. Aheric's Village, Dublin 16, D18 FXK4</p> <p>THIS DRAWING: Layout, Sections & Site layout plans Scale 1 to 100, 1 to 100</p> <p>Area of existing site 159 sq.m Area of existing house 142 sq.m Area of new office 33 sq.m</p>
--	---	---

Your home with more daylight

Daylight is a powerful resource. It invites nature inside our homes, it transforms spaces into favourite places and ultimately it improves the quality of life.

*The sun path is based on London, England



Meet your advisor

I am part of a team of Daylight Designers who aim to help you bring more daylight into your home. I am excited to use my years of experience across multiple departments at VELUX to design a solution that brings your daylight dreams to life!



Emma Huskie VELUX Design Advisor

01592 778883 | daylight@velux.co.uk

Bathroom

Sunlit Bathroom

Shown below are the windows proposed for the south-east facing slope, showing the window in the bathroom.



Visualization made in cooperation with the VELUX Group



Solutions & Considerations:

For the bathroom window, there were two main considerations for the size and style.

Firstly the window for this room needed to be slimmer to accommodate for placement of the toilet, shower, and sink, whilst still allowing ample light and head height.

Secondly, the external aesthetic needed to match the other two windows on the street facing side.

With that, we determined that the MK06 size window was most appropriate which is 780mm wide and 1178mm tall. This window is the same height as the two bedroom windows on the same side of the roof, but slightly slimmer.

Please see below digital renderings of these solutions, as well as details on the recommended finishes, glazings, and operations.

I have also detailed these in quotations which are contained in the installation package page.

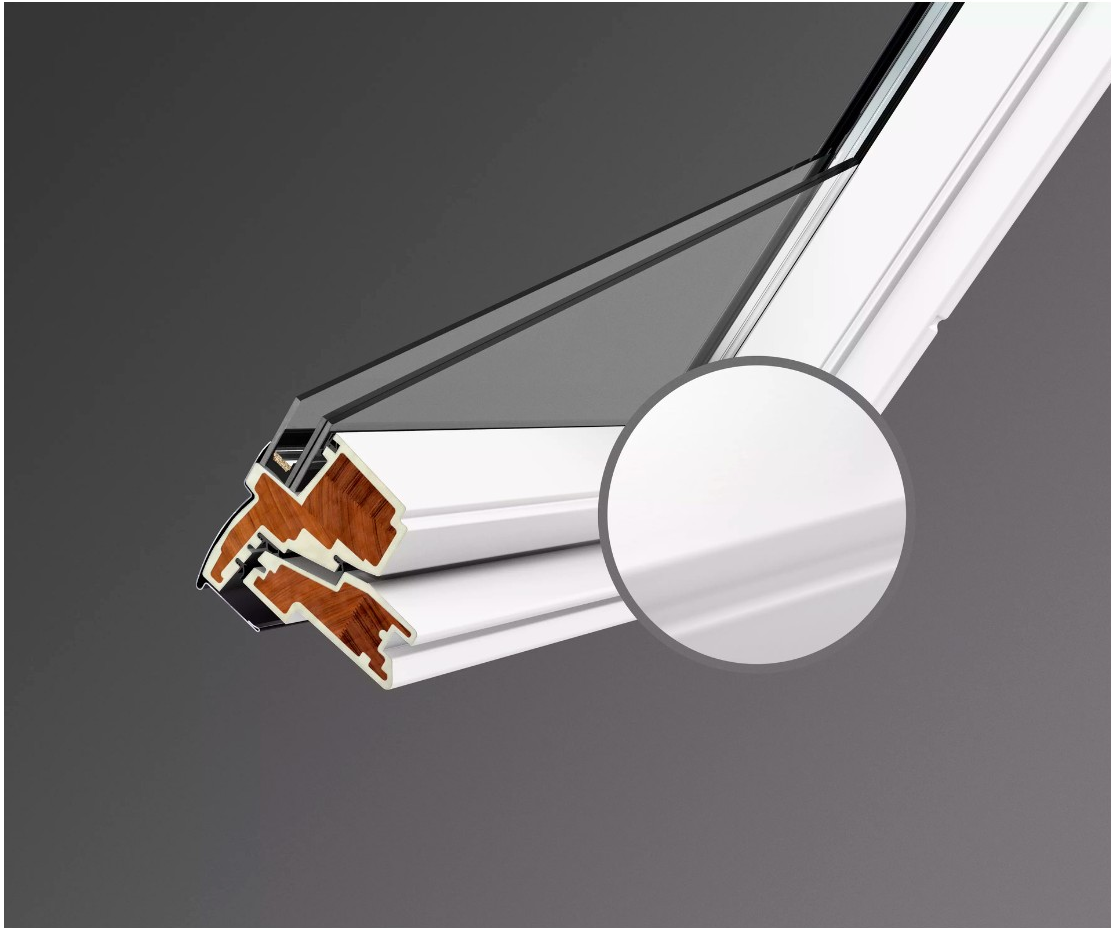
Please do note that the below solutions are of course initial ideas based on our conversation and are of course subject to being confirmed by your installer/builder/ or structural engineer.



No Windows - Artificial Lighting:



After - 1 x MK06:



Specification

Glazing & Finish

Glazing & Finish

These windows are quoted with our standard Comfort (70) double glazing which has a thermal performance U-value of 1.3. It also has our standard features of rain noise reduction, UV filters, toughened glass, and safety lamination.

This window has our maintenance free and moisture resistant internal finish. This finish is a wipe-down white polyurethane which is essential for kitchens, bathrooms, and out of reach windows as this finish requires no maintenance.

Specification

Window Operation

This window is quoted as top-hung and manually operated. These hinge at the top and have a handle at the bottom of the window which pushes up and out leaving an unobstructed space. It also features a ventilation bar along the top of the frame which allows fresh air into the space, even with the window closed.



Bedrooms

South Side Of Bedrooms

Shown below are the windows proposed for the south-east facing slope, showing the windows in both bedrooms.



Solutions & Considerations:

Based on our discussion we determined that the slope that faces almost southward, the road facing side, was ideal for placing a single smaller window in each room.

This is due to the small hip on this side of the roof and the taller internal wall. This also allows for more privacy on the road facing side and the perfect place to position a bed or desk below these windows.

Proposed and shown below are the windows for the south road facing side of each of the bedrooms.

Recommended, and shown in the below renders is our PK06 side window which is 942mm wide by 1178mm tall.

Please see below digital renderings of these solutions, as well as details on the recommended finished, glazings, and operations.

I have also detailed these in quotations which are contained in the installation package page.

Please do note that the below solutions are of course initial ideas based on our conversation and are of course subject to being confirmed by your installer/builder/ or structural engineer.



No Windows - Artificial Lighting:



After - 1 x PK06:



Specification

Window Operation

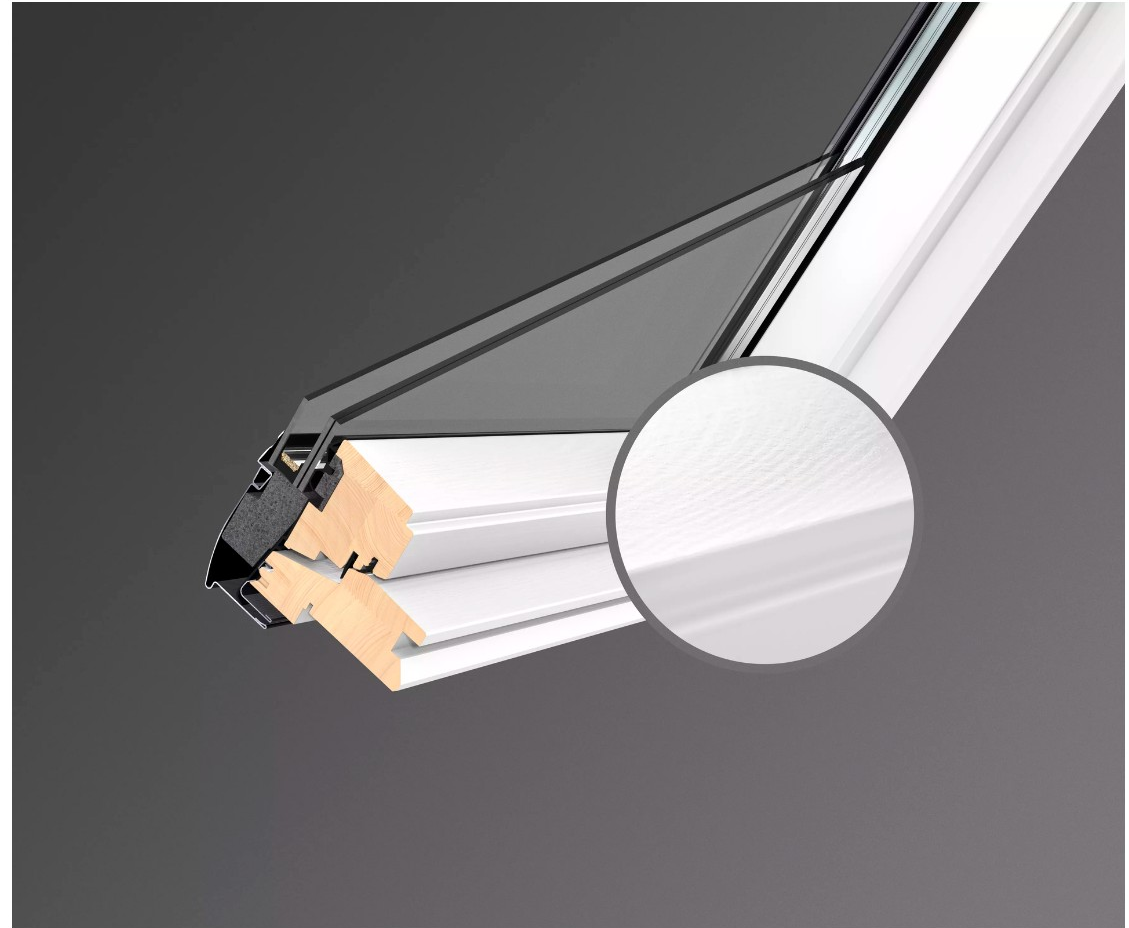
This window is quoted as top-hung and manually operated. These hinge at the top and have a handle at the bottom of the window which pushes up and out leaving an unobstructed space. It also features a ventilation bar along the top of the frame which allows fresh air into the space, even with the window closed.

Specification

Glazing & Finish

These windows are quoted with our standard Comfort (70) double glazing which has a thermal performance U-value of 1.3. It also has our standard features of rain noise reduction, UV filters, toughened glass, and safety lamination.

This window has our white painted pine internal finish which are coated with a water-based clear lacquer and white paint that protects the wood against dirt and moisture. The bright white finish with discreet wood grain is perfect for modern interiors.





Specification

Blinds & Light Control

As the rooms are both bedrooms and workspace, we would recommend our duo blackout blind.

The VELUX duo blackout blind gives you the best of both worlds – a blackout blind for a good night's sleep and a pleated blind for diffusing light and added privacy. As a duo product it combines a blackout cloth with a pleated cloth. Available in many different colours and always comes with a white pleated blind. This blind provides each level of light control in one. These blinds are in manual operation only.

For more details on the options of blinds, and to order free swatch samples, please see here:
<https://www.veluxblindsdirect.co.uk/>

Bedrooms

North Facing Bedroom

Shown below are the windows proposed for the north-west facing slope, showing the windows in the north facing slope of the larger bedroom.



Solutions & Considerations:

Based on our discussion we determined that the slope that faces almost northward, the garden facing side, was ideal for placing a larger solution in the room without a dormer.

This is due to the longer slope and low knee wall, which means you can have increased light and views in this room.

However, it was also important that the windows still allowed ample space for storage and a desk in the room.

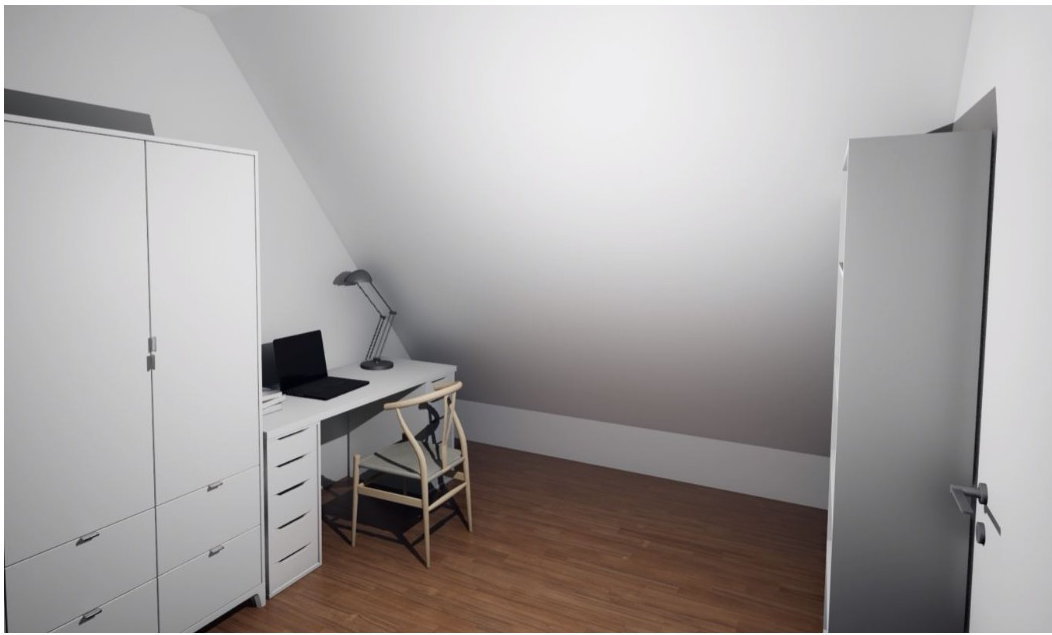
I have detailed the solution to the right and in the quotations which are contained in the installation package page.

Solution 1: Proposed here are two of our MK08 windows side by side which are 780mm wide by 1398mm tall, with a 100mm gap between.

Solution 2: Proposed here are two of our PK08 windows side by side which are 942mm wide by 1398mm tall, with a 100mm gap between.

Solution 3: Proposed here are two of our MK08 windows side by side with fixed extension panels below. These upper windows are 780mm wide by 1398mm tall, with the lower panels being 780mm wide and 920mm tall.

Please see below digital renderings of these solutions, as well as details on the recommended finished, glazings, and operations.



No Windows - Artificial Lighting:



2 x MK08 - Side By Side:



2 x PK08 - Side By Side:



2 x MK08 & Fixed Extension - Side By Side:



Specification

Window Operation

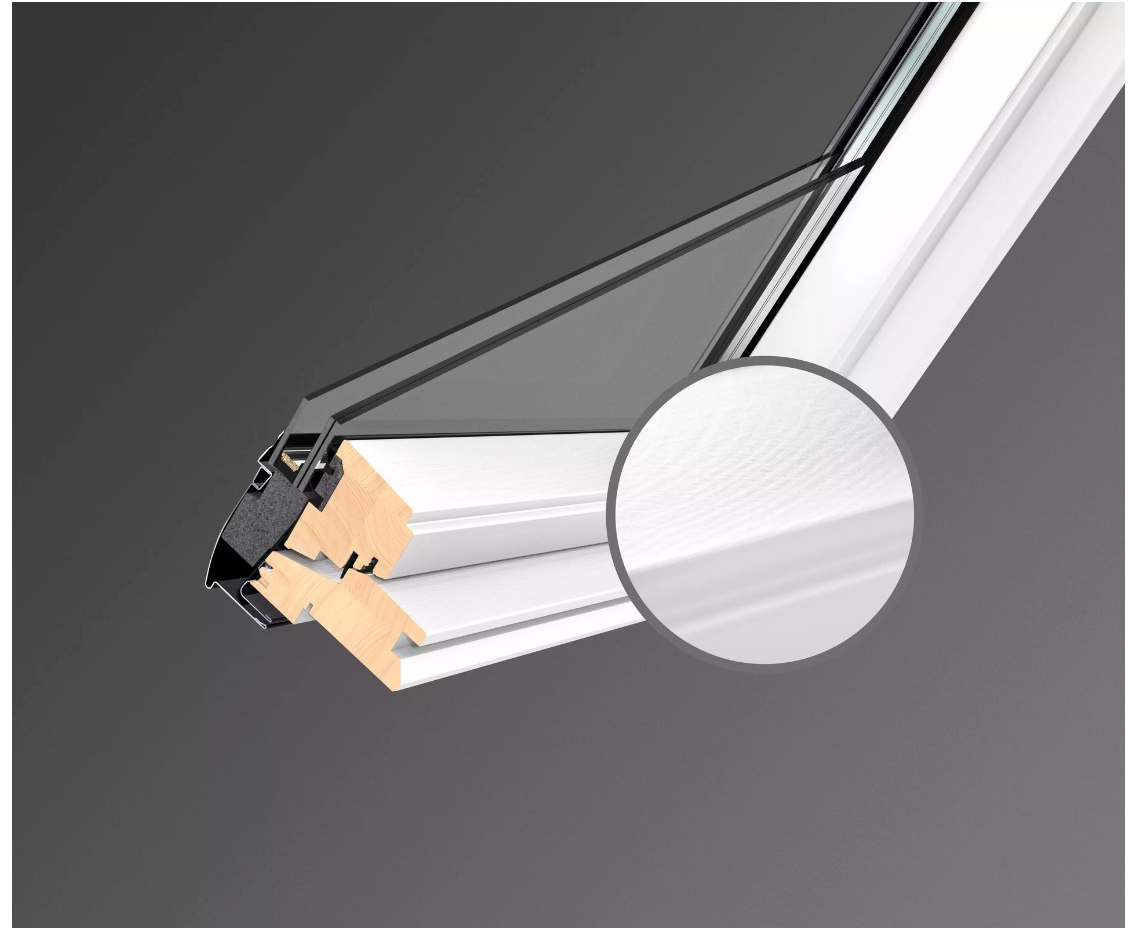
This window is quoted as top-hung and manually operated. These hinge at the top and have a handle at the bottom of the window which pushes up and out leaving an unobstructed space. It also features a ventilation bar along the top of the frame which allows fresh air into the space, even with the window closed.

Specification

Glazing & Finish

These windows are quoted with our standard Comfort (70) double glazing which has a thermal performance U-value of 1.3. It also has our standard features of rain noise reduction, UV filters, toughened glass, and safety lamination.

This window has our white painted pine internal finish which are coated with a water-based clear lacquer and white paint that protects the wood against dirt and moisture. The bright white finish with discreet wood grain is perfect for modern interiors.





Specification

Blinds & Light Control

As the rooms are both bedrooms and workspace, we would recommend our duo blackout blind.

The VELUX duo blackout blind gives you the best of both worlds – a blackout blind for a good night's sleep and a pleated blind for diffusing light and added privacy. As a duo product it combines a blackout cloth with a pleated cloth. Available in many different colours and always comes with a white pleated blind. This blind provides each level of light control in one. These blinds are in manual operation only.

For more details on the options of blinds, and to order free swatch samples, please see here:
<https://www.veluxblindsdirect.co.uk/>

The perfect package

Installation Package

Please see below further details on the specification as well as below quotations for the proposed solutions from each section.

Project type

Loft conversion

Rooms

Bedroom,
Bathroom,
Bedroom

Your e-mail

nini.moric@gmail.com

Your name

nikolina

Your address

Belmont Drive

Your city

D18 FNK4 Dublin

All Specification

Please see below important details on your installation specification as well as the supporting quotations.

On the quotations there are links to the full installation instructions below each item, these show the structural openings required for install and technical details for each product. It also shows the lead time of each individual product.

Before making a decision, we strongly advise consulting with your architect, installer, or building team prior to purchase to ensure that the proposed options align with your project's requirements. This step is crucial to address any potential structural limitations that might not be apparent from the provided information.



Specification

Flashings - Tile

I have included our EDW flashing kits required for installation which is suitable for tile and interlocking roofing materials at roof pitches 15° - 90°. The flashing kit includes our insulation and underfelt collars. The insulation collar insulates around the roof window frame, reducing heat loss and eliminating cold bridges. The underfelt collar ensures a perfect fit and watertight seal between the roof window, battens and the roofing underfelt. Please double check the roofing material and pitch prior to purchasing.

Specification

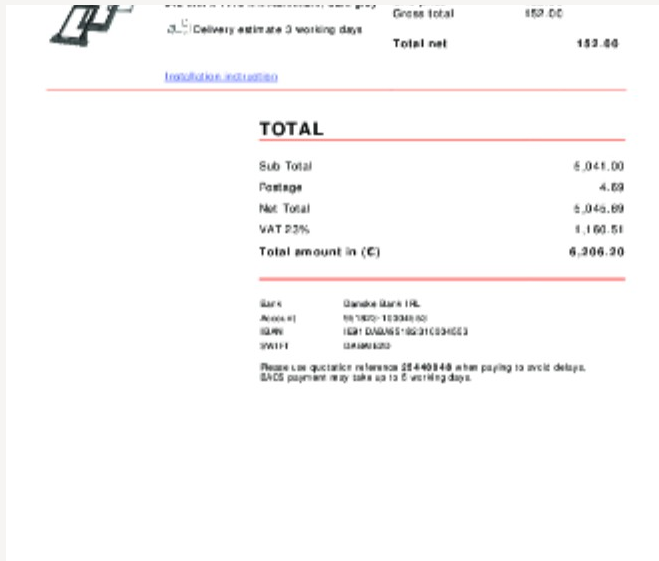
Flashing Tolerances

The installer will need to leave a tolerance around the windows externally to ensure that the flashing kits sit correctly in the roof, and that the windows are not fitted too close to any obstacles, for example roof hips, valleys, chimneys or solar panels. I have included the minimum tolerances below for the EDL flashing. If you or your installer has any questions relating to the installation process, please ask them to call our technical team directly. The telephone number for that team is 01592 778225. Please ask them to choose option 4:

EDW – Universal tile flashing – 15°-90°

	250mm		250mm	
250mm	Window	500mm	Window	250mm
	550mm		550mm	
250mm	Window	500mm	Window	250mm
	500mm		500mm	

Additional Documents & Quotes:



Delivery estimate 3 working days

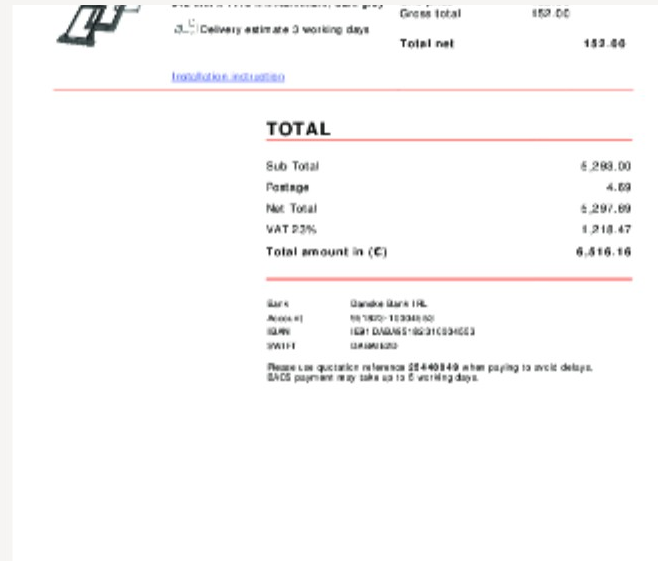
Gross total	€52.00
Total net	€52.00

TOTAL

Sub Total	€ 0,41.00
Postage	4.69
Net Total	€ 0,45.69
VAT 23%	€ 1,100.51
Total amount in (€)	€ 3,306.20

Bank: Danske Bank IRL
Account: 16 1820-103345 00
IBAN: IE21 044651 003103345003
SWIFT: DABK2222

Please use quotation reference 25440048 when paying to avoid delays.
BACS payment may take up to 5 working days.



Delivery estimate 3 working days

Gross total	€52.00
Total net	€52.00

TOTAL

Sub Total	€ 2,288.00
Postage	4.69
Net Total	€ 2,297.69
VAT 23%	€ 1,218.47
Total amount in (€)	€ 6,516.16

Bank: Danske Bank IRL
Account: 16 1820-103345 00
IBAN: IE21 044651 003103345003
SWIFT: DABK2222

Please use quotation reference 25440049 when paying to avoid delays.
BACS payment may take up to 5 working days.



Sub Total	€ 1,144.00
Postage	4.69
Net Total	€ 1,148.69
VAT 23%	€ 1,414.20
Total amount in (€)	€ 7,562.89

Bank: Danske Bank IRL
Account: 16 1820-103345 00
IBAN: IE21 044651 003103345003
SWIFT: DABK2222

Please use quotation reference 25440050 when paying to avoid delays.
BACS payment may take up to 5 working days.

Quotation 25440048 - Option 1:

Shown here is the single MK06 window for the bathroom, the single PK06 windows for each room, and the side by side MK08 windows for the larger room.

DOWNLOAD

Quotation 25440049 - Option 2:

Shown here is the single MK06 window for the bathroom, the single PK06 windows for each room, and the side by side PK08 windows for the larger room.

DOWNLOAD

Quotation 25440050 - Option 3:

Shown here is the single MK06 window for the bathroom, the single PK06 windows for each room, and the side by side MK08 windows, with fixed panels below, for the larger room.

DOWNLOAD

Installation & Next Steps:

VELUX offers products at the catalogue price, but we understand the importance of comparing prices. Feel free to use our quotation when contacting our suppliers to get competitive quotes on our products. Our dealers receive trade discounts, so we encourage you to explore different options before making a purchase. To find a dealer in IE, simply follow the link here:

<https://resources.velux.ie/find-a-dealer>

VELUX Company Ltd supplies construction components and is responsible for describing the product characteristics. However, it is not responsible for ensuring compliance with building regulations, fire protection, and other applicable rules. The design, specifications, and dimensions of the chosen VELUX products, your roof's substructure, and assembly should be in line with the specific construction project's requirements, as well as all relevant architectural and technical specifications and procedures. The design proposal we provide reflects products that match the dimensions you've given us.

Please be aware that your renovation project is likely subject to local building regulations, and a building permit issued by the local council is often required before starting the project or constructing something new. Our design is based on the information you've provided and needs validation from the relevant construction professionals to ensure it complies with both building regulations and the structural construction of your house.

